

New From Wilson

Wilson Introduces *Current Issues in Health*

Coming September 2007, this practical new resource for public, school and college libraries features hand-picked full-text articles on 50 health topics, with 20 topics to be added each year. Sources range from peer-reviewed journals to popular magazines, and PDF page images ensure that graphical content, such as charts and tables, is fully available. Topics currently covered include Autism, Food Safety, The FDA, Obesity, and Global Epidemics.

New Retros: *Business Periodicals Index and Applied Science and Technology*

Covering the years 1913-1982, these Retro files are available separately or as a combo. Now separate files, these were originally a single print publication, *Industrial Arts Index*. Both BPI Retro and AST Retro include *Industrial Arts Index* in its entirety (1913-1957). Not sure whether you need these? Try subscription access for a single simultaneous user for one year for less than \$3,000.

Register for a free trial for these and any other Wilson databases at <<http://www.hwwilson.com/trial>>, or find out more about Nylink's other Wilson offers at <http://nylink.org/reference/wilson_main.cfm>.

Coming in September: Oxford Language Dictionaries Online!

OUP launches its OLD O resource with bilingual Spanish, French, Italian and German dictionaries in September; if you request a trial now, you'll be notified as soon as the resource goes live. Russian and Chinese are the next two languages to be featured in OLD O. They will be available in December of 2007. Arabic, Japanese, Korean, Thai, Polish, Romanian, Urdu, Hebrew and other language dictionaries are in development.

Some of the features available in OLD O include a "keyboard palette" alongside each search that provides users with quick access to accented characters in every language, and the ability to search based on part of speech, the level of formality desired, or geographical variant. Definitions include mouse-over explanations of parts of speech and phonetic symbols. Dictionaries are updated every six months.

Access for OLD O is subscription-based, with prices starting at \$555.00 for a single simultaneous user for academic or public libraries. For K-12 libraries, the price is \$355.50 if this is your only OUP subscription. Bundle pricing is available if you subscribe to additional OUP databases.

Contact Jen Stelling at Nylink (stellingj@nylink.org) to request your trial now for OLD O, or get more information <<http://nylink.org/reference/oldo.cfm>> on pricing, or download a brochure: <<http://nylink.org/reference/pdf/oldoflier.pdf>>. Take a look at the interface at <<http://www.oxfordlanguagedictionaries.com/>>.

Cooperative Services Contact Information

Please contact Tatiana Sahm (sahmt@nylink.org) or Jen Stelling (stellingj@nylink.org) at Nylink with your questions. They are available via email or phone (800-342-3353 / 518-443-5444).

OCLC REFERENCE NEWS

RLG Eureka Databases to Move to OCLC FirstSearch This Month

On September 16, 2007, all twelve databases that were formerly available on the Research Library Group's (RLG) Eureka platform will be moved to the OCLC FirstSearch platform. These databases are:

Anthropological Index
 Anthropological Literature
 Anthropology Plus
 Avery Index to Architectural Periodicals
 Bibliography of the History of Art (BHA)
 Chicano Database
 FRANCIS
 Hand Press Books
 History of Science, Technology, and Medicine
 Index to 19th-Century American Art Periodicals
 Russian Academy of Sciences Bibliographies
 SCIPPIO

Content will be available on both platforms from September 1-30, 2007. On October 1, the Eureka platform will be put to rest. Libraries that currently subscribe to any Eureka database need to know the following:

OCLC will automatically move your Eureka subscription databases and administrative information to FirstSearch.

If you do not currently have a FirstSearch account, OCLC will contact you before September 16, to send you a FirstSearch authorization and password, as well as provide you with trial access to FirstSearch so that you can get used to the FirstSearch platform prior to September 16.

On September 16, you must use one of the FirstSearch URLs: <<http://firstsearch.oclc.org>> for manual logon access or <<http://firstsearch.oclc.org/FSIP>> for IP access.

If you already have a FirstSearch authorization, your Eureka databases will be added to your FirstSearch authorization.

If you have more than one FirstSearch authorization, OCLC will create a new FirstSearch authorization for just your Eureka databases. If you wish to move your Eureka databases to one of your existing FirstSearch authorizations, please let Joyce Rambo at Nylink know (ramboj@nylink.org; 800-342-3353).

Usage statistics for your Eureka databases (March 2005-present) will be added to your statistics account on the OCLC Usage Statistics web site <<http://www.stats.oclc.org/>>. Log on with your FirstSearch authorization and administrative module password (or your usage statistics password if you've created one).

Continued on next page

Eureka usage statistics through February 2005 will not be moved to the OCLC Usage Statistics web site. These earlier statistics will only be available from the RLG User Activity Reports web site <<http://reports.rlg.org/>> until September 21, 2007. Monthly and service year reports and CAMIO & RCM reports will be discontinued after September 21, 2007 as well.

This was the transition information from OCLC as of September 5; it is subject to change. If the dates change, Jen Hawkes (hawkesj@nylink.org) will send out an updated email to FirstSearch contacts. To check if you are the current contact please email Jen Hawkes.

For more information about the RLG to OCLC transition overall, please see: <<http://www.oclc.org/community/rlg/default.htm>>.

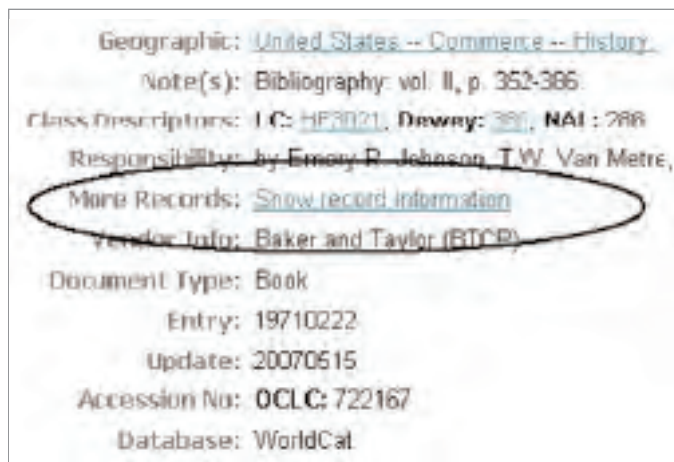
Institution Records Available in FirstSearch

As part of the joining together of RLG and OCLC, OCLC has added an "Institution Records" option to the FirstSearch reference and WorldCat Resource Sharing services. This feature only appears in the *WorldCat*, *Ebooks*, and *WorldCat Dissertations* and group catalogs databases. It is an optional feature that can only be activated if your library chooses to in the FirstSearch Administrative Module (see next page).

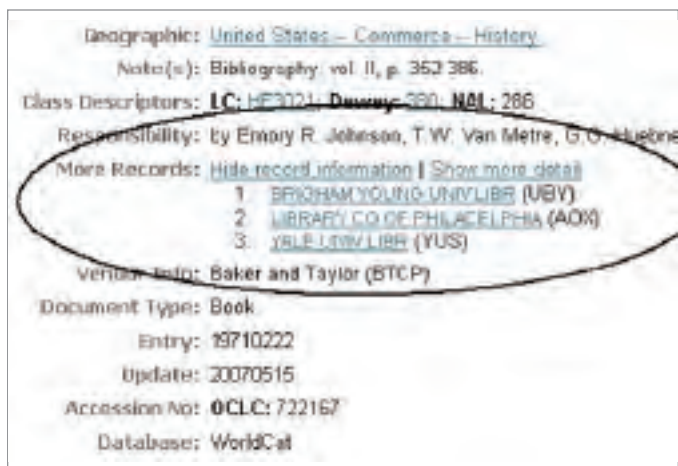
The Institution Records option provides a similar experience to the RLIN21 service's use of cluster records, which grouped individual libraries' cataloged records for the same item together. In RLIN21 one of these local cataloged records was used as the "Primary Record," to be displayed first for a cluster, with a list of additional records also provided. In a similar fashion, OCLC is using the *WorldCat* record as the "Primary Record," and providing a link to additional institution records.

The Institution Records function provides the bibliographic records of specific libraries as the records were entered and include local library notes and location information. This information can be valuable to researchers, especially when dealing with rare items.

Institution Records are accessed from the *WorldCat* detailed record at **More Records: Show record information**.



Clicking the **Show record information** link allows the user to see the institutions that have additional local records:



There are three choices available with differing levels of access to Institution Records. The different levels are set up for each authorization's access in the FirstSearch Administrative Module and affect all Institution Records in *WorldCat* and *WorldCat*-derived databases, such as any group catalog, *Ebooks*, or *WorldCat Dissertations*. The choices are:

Do not Search or Display. The default setting.

Display only. Allows a "More Records" link to appear when institution records are available for a regular bibliographic record. Clicking the link will show what institution records are available for display.

Search and Display. This option not only displays records, but the search results include the same indexed fields within the Institution Records. A record may appear in the results without the search term appearing in the regular bibliographic record display if the indexed word is found within at least one of the Institution Records attached.

Continued on next page

To set up the Institution Records option:

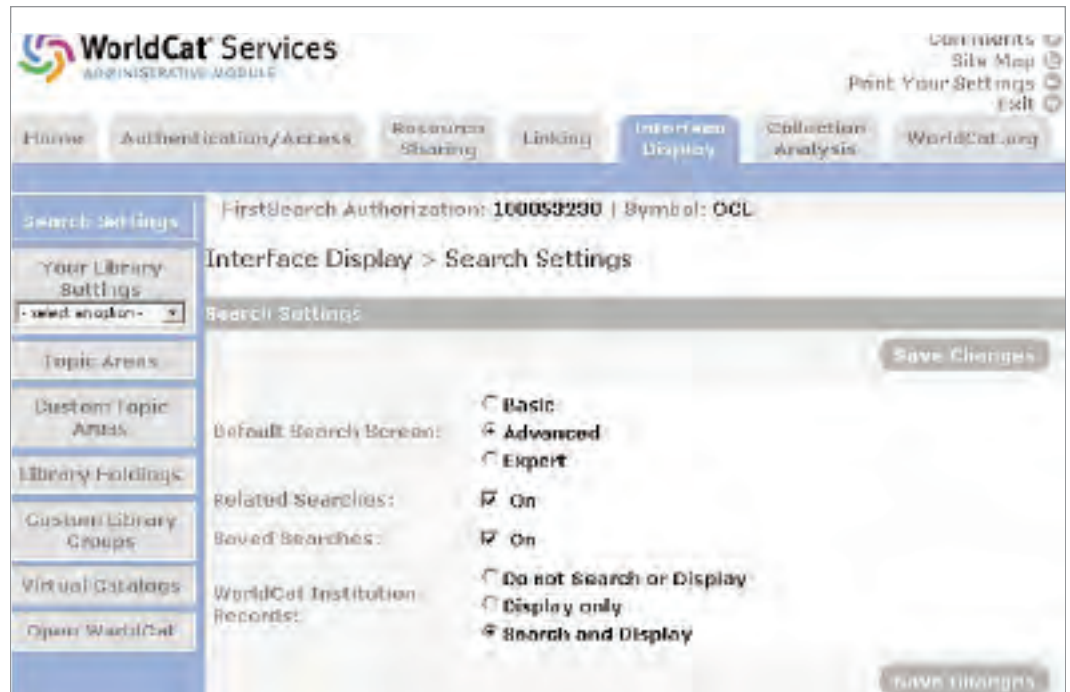
Access the FirstSearch Administrative Module at <<http://firstsearch.oclc.org/admin>>.

Click the **Interface Display** tab.

Click **Search Settings**.

Additional information about the “Institution Records” option is available in this PDF: <http://www.oclc.org/support/documentation/firstsearch/using/UsingInstitutionRecords/FS_Institution_Records_quick_ref.pdf>.

(See also “Institution Records (IRs) Now Available to Non-RLG Libraries” in the Collections and Technical Services section.)

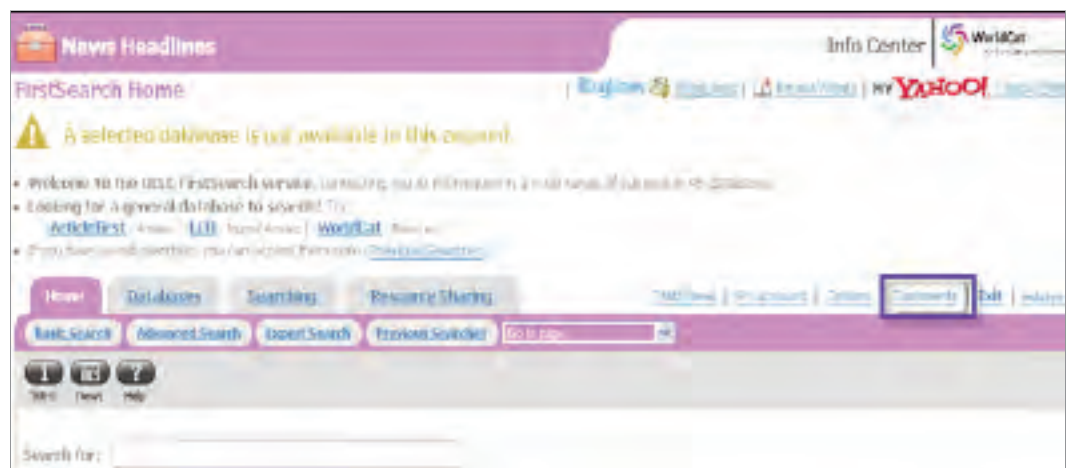


Administrative Module Update – Patron’s Comments Sent to Library

In FirstSearch, a patron selects the *Comments* link as illustrated at right.

The patron enters comments in the text box and selects the appropriate radio button to indicate their status.

Currently, the patron’s comment is sent to OCLC Customer Support. Now, this can be set up so that patrons’ messages entered via the *Comments* link, can instead be sent to a library staff person.



How it Works

After logging into the FirstSearch Administrative Module, click Authentication/Access>General and scroll to the *Comments* field (see right). Enter the email address for the person who will receive all FirstSearch patron comments. Only comments that are self-identified as patron (not staff) would be forwarded to this email address.

Click **Save Changes** button.

What it is

The email address entered in Authentication/Access>General *Comments* field will receive all patron comments which are now sent to OCLC Customer Support.

What it means for the User

This improves service to the library since any patron *Comments* are sent directly to the library versus OCLC Customer Support. Currently, if patron comments are sent to OCLC Customer Support, the patron is told to contact their reference librarian. By adding the direct Reference email, these patrons will be provided access to library help directly.

Home | Authentication/Access | Account Sharing | Linking | Interface Display | WorldCat.org

FirstSearch Authorization: 100297826 | Symbol: OCL

Authentication/Access > General

Database Access | Passwords | IP-Address Restrictions | NGIP | General

Low Search Authentication

Type search threshold:
FirstSearch sends an e-mail notice if you the location of searches, providing full text before the number you type. It also sends a notice when no search results.

Type 1 or 2 e-mail addresses:
FirstSearch sends the e-mail notice to the address(es) address(es) that you type.

Full Text Delivery Method:

Timeout:

Maximum Number of Databases per Search:

Select Translation Device (PDF)

GTS Link:

GTS Account Number:

Click here for more information.

Low Search Threshold:

E-mail Address:

Additional E-mail Addresses:

Email Only

Session minutes (5 to 30):

Full Text minutes (15 to 45):

Databases (1 to 3):

on

Comments:

Hologonica Librarian's Email Address:

Save Changes

Help | Search | Home | Home | Home | Home | Home | Home | Home

Comments

If you have support questions, rather than suggestions:

- FirstSearch users:** contact the Reference Department at your library or information center.
- Library Staff:** contact your OCLC-affiliated network or contact OCLC Customer Support at oclc@nylink.org.

Please indicate the purpose of this comment:

Suggestion or comment

Problem

Type your comments/suggestions about FirstSearch in the box:

I just wanted to let you know that your library's website is outstanding!!! I love it. Keep up the good work. It makes using the library a true joy.

Please provide some information about yourself (the e-mail address is required):

E-mail address:

Contact name:

Your status:

I am a library patron

I am a library staff member

Send Cancel

OCLC Reference and FirstSearch Contact Information

For more information about OCLC's FirstSearch service, please contact Nylink's Joyce Rambo (ramboj@nylink.org) or Jennifer Hawkes (hawkesj@nylink.org). They are available via email or phone (800-342-3353/518-443-5444).